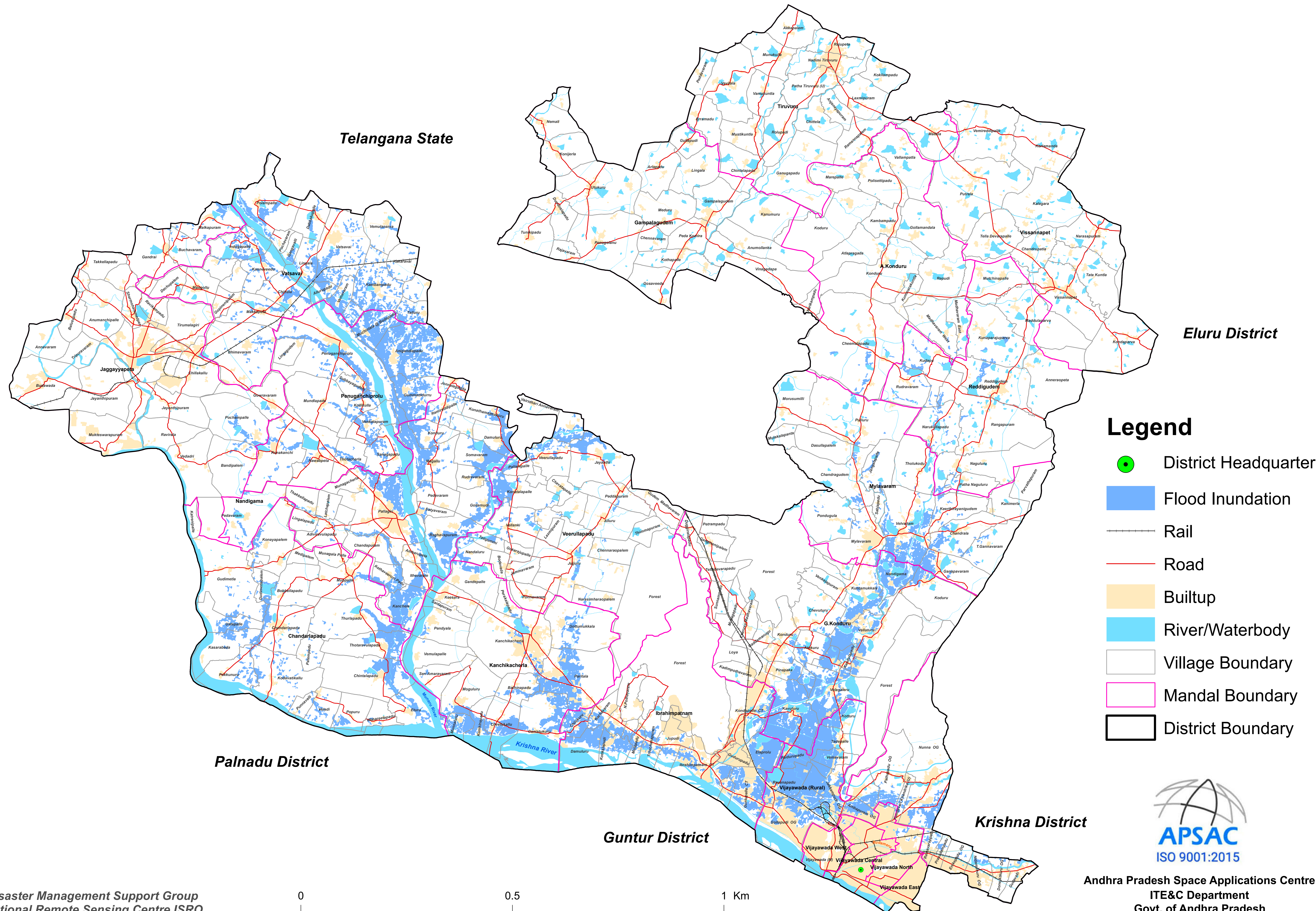


# Rain Induced Flood Inundation Areas in NTR District, Andhra Pradesh

Based on the analysis of Sentinel-1A Satellite Image on 01.09.2024(06:00 Hrs IST)



- ### Legend
- District Headquarter
  - Flood Inundation
  - Rail
  - Road
  - Builtup
  - River/Waterbody
  - Village Boundary
  - Mandal Boundary
  - District Boundary

Source: Disaster Management Support Group  
National Remote Sensing Centre, ISRO.

  
**APSAC**  
ISO 9001:2015  
Andhra Pradesh Space Applications Centre  
ITE&C Department  
Govt. of Andhra Pradesh